

STRAHL

GRAIN DRYERS



THE MOST EFFICIENT GRAIN DRYER WITH HEAT RECOVERY

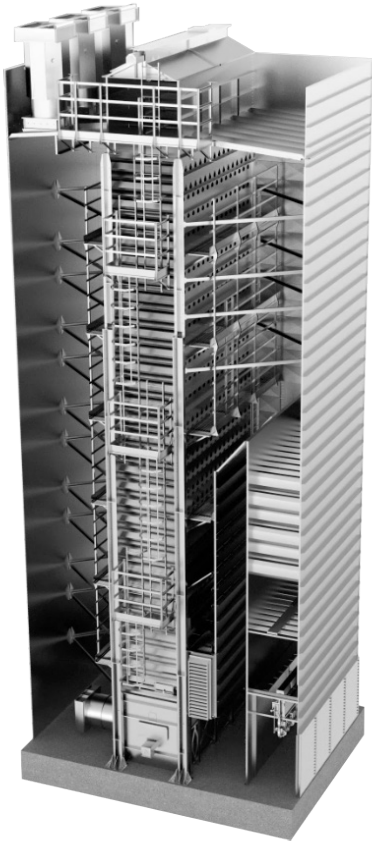
The Strahl FR Series grain dryer is a continuous cycle dryer that reduces the fuel consumption and allows a further reduction in CO2 emissions.

The drying process thus implemented guarantees further reduction in dust, precisely because the air required for drying is expelled to the outside.

This is a considerable benefit for the environment!

FR SERIES

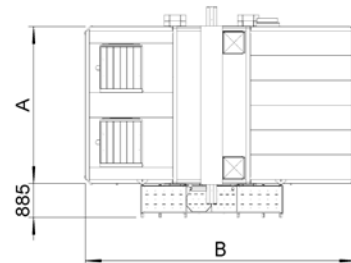
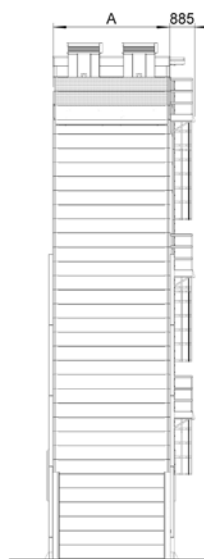
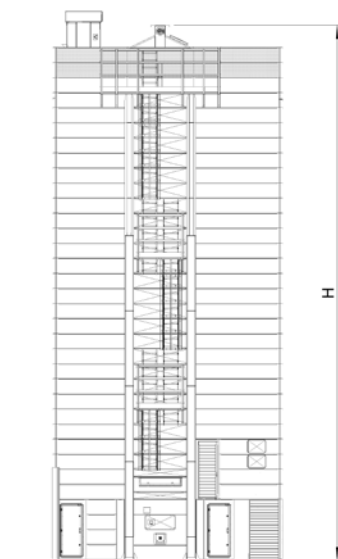
Features



- Robust structure from a combination of aluminium and stainless steel;
- Extremely low dust emission;
- Low noise level;
- Maximization of grain quality;
- Continuous mixing during drying;
- Internal walkways for confined spaces;
- Isolated chimney extension;
- Propane, natural gas and steam burner systems available;
- Easy maintenance and cleaning.

TECHNICAL

Drawing



MODELS		4 MODULES				6 MODULES							
		1600 FR	2000 FR	2500 FR	3000 FR	2500 FR	3000 FR	3500 FR	4000 FR	4500 FR	5000 FR	6000 FR	7000 FR
Dimensions	A Ft	9.18'	9.18'	9.18'	9.18'	13.45'	13.45'	13.45'	13.45'	13.45'	13.45'	13.45'	13.45'
	B Ft	24.93'	24.93'	24.93'	24.93'	24.93'	24.93'	24.93'	24.93'	24.93'	24.93'	26.24'	26.24'
	H Ft	35.27'	40.19'	45.75'	54.95'	35.27'	40.19'	45.11'	48.39'	53.31'	58.23'	66.44'	76.28'
Box	N°	14	17	21	25	14	17	20	22	25	27	32	37
Capacity	Ton	24	28	34	41	36	42	48	52	59	66	76	89
Upper Fans	N°	1	1	1	1	1	1	2	2	2	2	3	3
	Kw	11	15	15	22	15	22	11	15	15	18	15	15
Lower Fans	N°	1	1	1	1	1	1	1	1	1	1	2	2
	Kw	7	11	11	11	11	11	15	15	18	18	11	15
Thermal power	Kw	1.210	1.510	1.890	2.270	1.890	2.270	2.650	3.020	3.400	3.780	4.530	5.290
	Mcal/h	1.040	1.300	1.625	1.950	1.625	1.950	2.275	2.600	2.925	3.250	3.900	4.550
CORN 28% - 14%													
Wet Dry Water	Q.li/24h	1.536	1.920	2.400	2.880	2.400	2.880	3.360	3.840	4.320	4.800	5.760	6.720
	Ton/h	6,4	8,0	10,0	12,0	10,0	12,0	14,0	16,0	18,0	20,0	24,0	28,0
	Ton/h	5,3	6,7	8,3	10,0	8,3	10,0	11,7	13,4	15,0	16,7	20,0	23,4
	Kg/h	1.040	1.300	1.630	1.950	1.630	1.950	2.280	2.610	2.930	3.260	3.910	4.560
CORN 35% - 15%													
Wet Dry Water	Q.li/24h	1.140	1.420	1.780	2.130	1.780	2.130	2.490	2.840	3.200	3.550	4.260	4.970
	Ton/h	4,7	5,9	7,4	8,9	7,4	8,9	10,4	11,8	13,3	14,8	17,8	20,7
	Ton/h	3,6	4,5	5,7	6,8	5,7	6,8	7,9	9,1	10,2	11,3	13,6	15,8
	Kg/h	1.110	1.390	1.740	2.090	1.740	2.090	2.440	2.790	3.130	3.480	4.180	4.870

MODELS		8 MODULES							10 MODULES				
		5000 FR	6000 FR	7000 FR	8000 FR	9000 FR	10000 FR	11000 FR	12000 FR	12000 FR	13000 FR	14000 FR	15000 FR
Dimensions	A Ft	17.71'	17.71'	17.71'	17.71'	17.71'	17.71'	17.71'	17.71'	21.98'	21.98'	21.98'	21.98'
	B Ft	24.93'	24.93'	24.93'	28.22'	28.22'	29.86'	29.86'	29.86'	29.86'	29.86'	29.86'	29.86'
	H Ft	48.39'	54.95'	61.52'	68.08'	74.64'	81.86'	88.42'	96.62'	81.86'	86.78'	91.70'	96.62'
Box	N°	21	25	28	32	36	40	44	49	39	42	45	48
Capacity	Ton	71	82	94	105	116	127	139	152	161	171	181	192
Upper Fans	N°	2	3	3	3	3	4	4	4	4	4	5	5
	Kw	18	15	15	18	22	18	22	22	22	30	22	22
Lower Fans	N°	1	2	2	2	2	2	2	2	2	2	3	3
	Kw	18	11	15	18	18	18	22	22	22	22	18	22
Thermal power	Kw	3.780	4.530	5.290	6.050	6.800	7.560	8.310	9.070	9.070	9.830	10.580	11.340
	Mcal/h	3.250	3.900	4.550	5.200	5.850	6.500	7.150	7.800	7.800	8.450	9.100	9.750
CORN 28% - 14%													
Wet Dry Water	Q.li/24h	4.800	5.760	6.720	7.680	8.640	9.600	10.560	11.520	11.520	12.480	13.440	14.400
	Ton/h	20,0	24,0	28,0	32,0	36,0	40,0	44,0	48,0	48,0	52,0	56,0	60,0
	Ton/h	16,7	20,0	23,4	26,7	30,0	33,4	36,7	40,1	40,1	43,4	46,7	50,1
	Kg/h	3.260	3.910	4.560	5.210	5.860	6.510	7.160	7.820	7.820	8.470	9.120	9.770
CORN 35% - 15%													
Wet Dry Water	Q.li/24h	3.550	4.260	4.970	5.680	6.390	7.100	7.810	8.520	8.520	9.230	9.940	10.650
	Ton/h	14,8	17,8	20,7	23,7	26,6	29,6	32,5	35,5	35,5	38,5	41,4	44,4
	Ton/h	11,3	13,6	15,8	18,1	20,4	22,6	24,9	27,2	27,2	29,4	31,7	33,9
	Kg/h	3.480	4.180	4.870	5.570	6.270	6.960	7.660	8.360	8.360	9.050	9.750	10.440

MODELS		12 MODULES				14 MODULES			
		15000 FR	16000 FR	17000 FR	18000 FR	20000 FR	17000 FR	18000 FR	20000 FR
Dimensions	A Pieds	26.25'	26.25'	26.25'	26.25'	26.25'	30.51'	30.51'	30.51'
	B Pieds	29.86'	29.86'	29.86'	29.86'	29.86'	29.86'	29.86'	29.86'
	H Pieds	83.50'	88.42'	91.70'	96.62'	104.82'	83.50'	88.42'	96.62'
Box	N°	40	43	45	48	53	39	42	47
Capacity	Ton	197	209	218	230	251	232	246	270
Upper Fans	N°	5	4	4	4	5	4	4	5
	Kw	22	37	45	45	37	45	45	37
Lower Fans	N°	3	3	3	3	4	3	3	4
	Kw	22	22	22	30	22	22	30	22
Thermal power	Kw	11.340	12.090	12.850	13.600	15.120	12.850	13.600	15.120
	Mcal/h	9.750	10.400	11.050	11.700	13.000	11.050	11.700	13.000
CORN 28% - 14%									
Wet Dry Water	Q.li/24h	14.400	15.360	16.320	17.280	19.200	16.320	17.280	19.200
	Ton/h	60,0	64,0	68,0	72,0	80,0	68,0	72,0	80,0
	Ton/h	50,1	53,4	56,7	60,1	66,8	56,7	60,1	66,8
	Kg/h	9.770	10.420	11.070	11.720	13.030	11.070	11.720	13.030
CORN 35% - 15%									
Wet Dry Water	Q.li/24h	10.650	11.350	12.070	12.790	14.210	12.070	12.790	14.210
	Ton/h	44,4	47,3	50,3	53,3	59,2	50,3	53,3	59,2
	Ton/h	33,9	36,2	38,5	40,7	45,3	38,5	40,7	45,3
	Kg/h	10.440	11.140	11.840	12.530	13.930	11.840	12.530	13.930

STRAHL

GRAIN DRYERS

418, Industries Street, Repentigny, Qc, J5Z 4X5
1 888 891-0957 | casagrainsystems.com

